

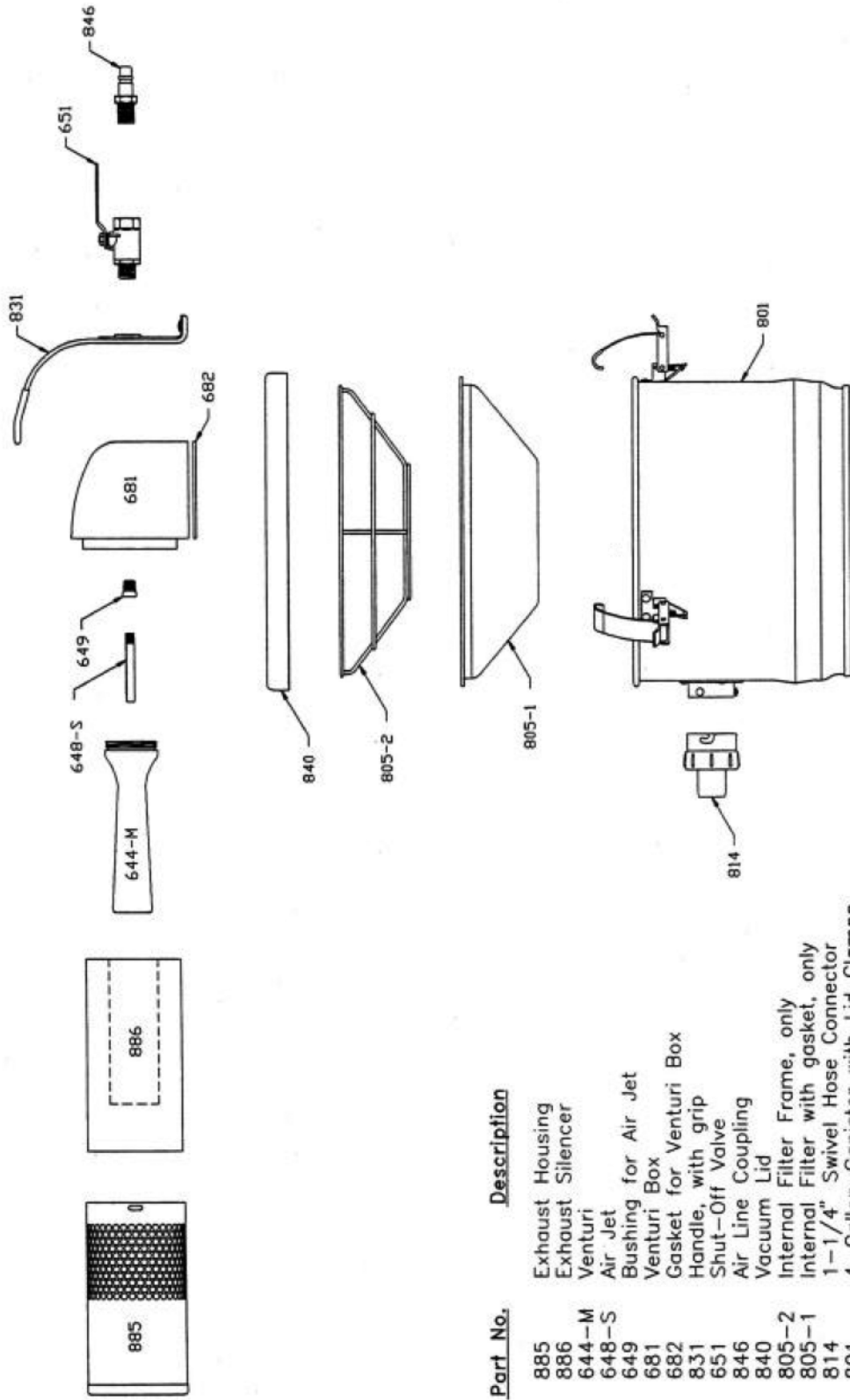
PARTS for 4-Gallon CompVac Model 041MC

Part No.	STANDARD ACCESSORIES
841	10' x 1-1/4" Standard Vacuum Hose with Tool Coupler
842	20" Extension Wand
843	3" Round Brush Tool
845	5" Utility Tool with Detachable Brush
848	12' of 3/8" I.D. Air Supply Hose, with Fittings
849	Crevice Tool

Part No.	REPLACEMENT PARTS
614	Lid Clamps (<i>set of 3</i>)
627-3	Venturi Box Mounting Hardware (<i>set</i>)
628-3	Exhaust Housing Mounting Hardware (<i>set</i>)
644-M	Venturi
648-S	Air Jet, with Bushing
649	Bushing, only, for Air Jet
681	Venturi Box
682	Gasket for Venturi Box
801	4-Gallon Canister Assembly, with Lid Clamps
805	Cloth Internal Filter with Gasket and Frame
805-1	Cloth Internal Filter with Gasket, only
805-2	Internal Filter Frame, only
811	4-Gallon Canister Assembly, Stainless Steel
812-B	Single-Ply Recovery Bags for 4-Gallon Canister (<i>Pkg of 5</i>)
814	1-1/4" Swivel Hose Connector
827	Bolt for Handle, with Nut and Washer
831	Handle, with Grip
831-2	Handle Grip, only
840	Vacuum Lid, only
841-2	1-1/4" Curved Tool Coupler, only
844	Four-Wheel Dolly (<i>optional</i>)
844-2	Dolly Bumper, only
844-3	Dolly Caster, only
846	Air Line Coupling (<i>at Shut-Off Valve</i>)
851	Shut-Off Valve
885	Exhaust Housing
886	Exhaust Silencer (<i>foam insert</i>)

For additional replacement hose and accessories, please refer to price sheets.

**NORTECH AIR-POWERED INDUSTRIAL VACUUM CLEANERS
PARTS FOR "COMPVAC" MODELS**



Part No. Description

- 885 Exhaust Housing
- 886 Exhaust Silencer
- 644-M Venturi
- 648-S Air Jet
- 649 Bushing for Air Jet
- 681 Venturi Box
- 682 Gasket for Venturi Box
- 831 Handle, with grip
- 846 Shut-Off Valve
- 840 Air Line Coupling
- 805-1 Vacuum Lid
- 805-2 Internal Filter Frame, only
- 814 Internal Filter with gasket, only
- 801 1-1/4" Swivel Hose Connector
- 4-Gallon Canister with Lid Clamps