

PARTS for 8-Gallon CarryVac Models

Part No. STANDARD ACCESSORIES for Model 081MC

841	10' x 1-1/4" Standard Vacuum Hose with Tool Coupler
842	20" Extension Wand
843	3" Round Brush Tool
845	5" Utility Tool with Detachable Brush
848	12' of 3/8" I.D. Air Supply Hose, with Fittings
849	Crevice Tool

Part No. STANDARD ACCESSORIES for Models 081SC and 081DC

606	20' of 3/4" I. D. Air Supply Hose with Fittings (<i>Model 081DC</i>)
607	20' of 1/2" I. D. Air Supply Hose with Fittings (<i>Model 081SC</i>)
691	20' x 1-1/2" Standard Vacuum Hose
692	Wet/Dry Floor Tool with 4' Wand
693	Crevice Tool

Part No. REPLACEMENT PARTS

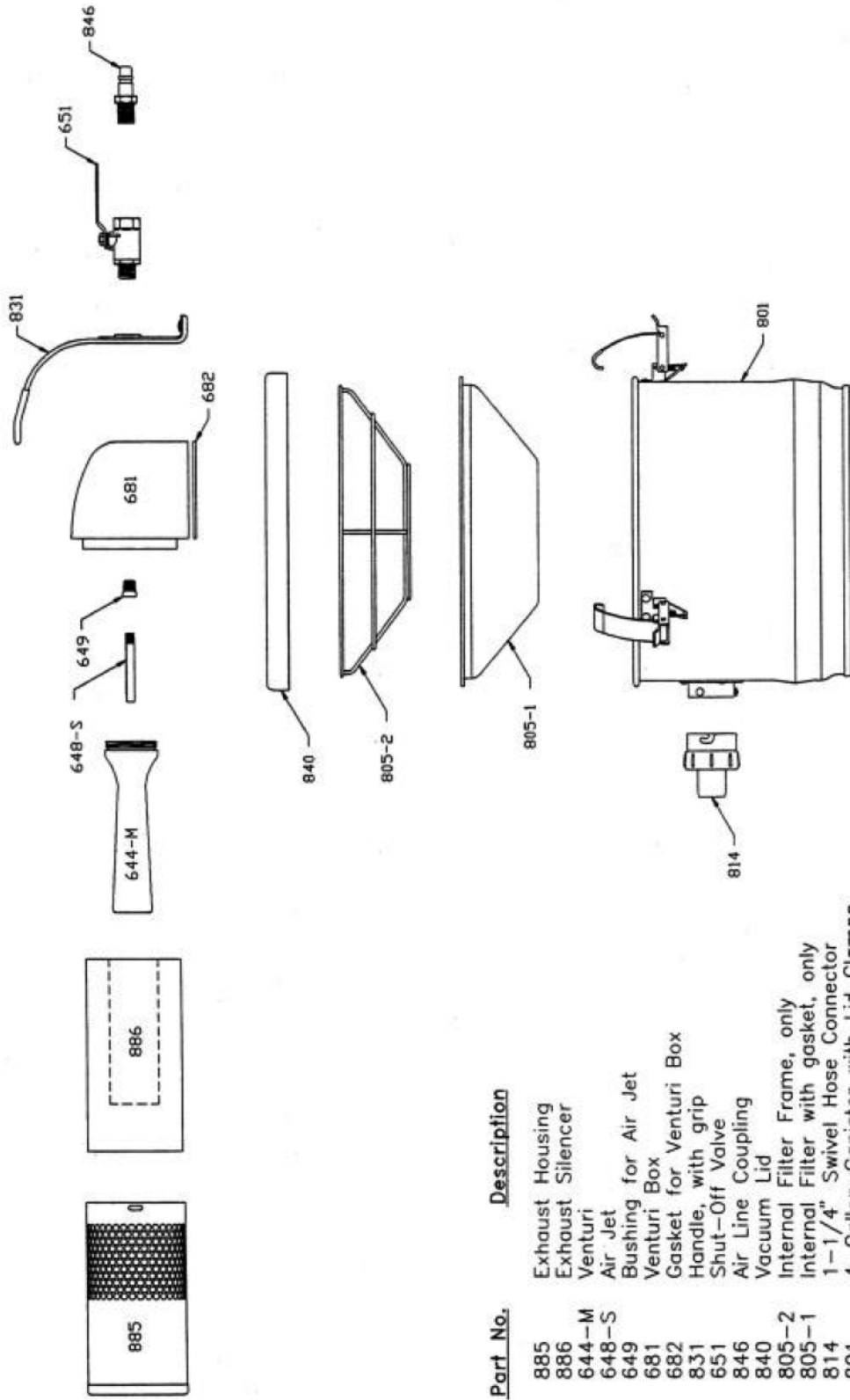
610	Air Line Coupling (<i>Model 081DC</i>)
614	Lid Clamps (<i>set of 3</i>)
618-2	Air Line Coupling (<i>Model 081SC</i>)
627-3	Venturi Box Mounting Hardware (<i>set</i>)
628-3	Exhaust Housing Mounting Hardware (<i>set</i>)
644-M	Venturi (<i>for Model 081MC</i>)
644-D	Venturi (<i>for Models 081SC, 081DC</i>)
648-S	Air Jet, with Bushing (<i>for Models 081MC, 081SC</i>)
648-D	Air Jet, with Bushing (<i>for Model 081DC</i>)
649	Bushing, only, for Air Jet
651	Shut-Off Valve (<i>Models 081SC, 081DC</i>)
685	Exhaust Housing (<i>Models 081SC, 081DC</i>)
685-C	End Cap, only, for Exhaust Housing (<i>Models 081SC, 081DC</i>)
686	Exhaust Silencer (<i>foam insert, for Models 081SC, 081DC</i>)
681	Venturi Box
682	Gasket for Venturi Box
695-2	1-1/2" Swivel Hose Connector (<i>Models 081SC, 081DC</i>)
710	Extra-Silent Exhaust Assembly
711	Exhaust Silencer Set, only, for No. 712 Housing
712	Extra-Silent Exhaust Housing, only
814	1-1/4" Swivel Hose Connector (<i>for Model 081MC</i>)

Part No. REPLACEMENT PARTS

815-H	Absolute (HEPA) Filter Element
822	Cloth Internal Filter with Gasket & Frame
822-1	Cloth Internal Filter with Gasket, only
822-2	Internal Filter Frame, only
827	Bolt, with Nut and Washers, for unused mounting hole in lid
829	Liquid Shut-Off Assembly
829-1	Gasket, only, for Liquid Shut-Off
839	Vacuum Lid, only
841-2	1-1/4" Curved Tool Coupler, only (<i>Model 081MC</i>)
844	Four-Wheel Dolly (<i>optional</i>)
844-2	Dolly Bumper, only
844-3	Dolly Caster, only
846	Air Line Coupling (<i>Model 081MC</i>)
851	Shut-Off Valve (<i>Model 081MC</i>)
871	8-Gallon Canister Assembly, with Lid Clamps
881	8-Gallon Canister Assembly, Stainless Steel, with Lid Clamps (<i>Includes Liquid Drain Valve and p/n 844 Four Wheel Dolly</i>)
882-B	Single-Ply Recovery Bags for 8-Gallon Canister (<i>Pkg of 5</i>)
885	Exhaust Housing (<i>Model 081MC</i>)
886	Exhaust Silencer (<i>foam insert, for Model 081MC</i>)

For additional replacement hose and accessories, please refer to price sheets.

**NORTECH AIR-POWERED INDUSTRIAL VACUUM CLEANERS
PARTS FOR "COMPVAC" MODELS**



Part No. Description

- 885 Exhaust Housing
- 886 Exhaust Silencer
- 644-M Venturi
- 648-S Air Jet
- 649 Bushing for Air Jet
- 681 Venturi Box
- 682 Gasket for Venturi Box
- 831 Handle, with grip
- 846 Shut-Off Valve
- 840 Air Line Coupling
- 801 Vacuum Lid
- 805-2 Internal Filter Frame, only
- 805-1 Internal Filter with gasket, only
- 814 1-1/4" Swivel Hose Connector
- 801 4-Gallon Canister with Lid Clamps